

## INSTRUCTIONS TO ASSEMBLE & OPERATE

### ICE EDGER 97

- 1.. Before installing the handle (A) to the base of the Edger (O), attach the cable (L) to the brake and switch segment (N & M). Thrust the snap lock (M) into the split loop, and Z fitting through the clearance hole in the brake-switch control lever (N).
- 2.. Attach the handles to the base (O).
- 3.. Put the height control lever (D) in place and tighten holding bolt, leaving tension so the lever turns freely.
- 4.. Attach shaft (P) to height control segment at (F).
- 5.. Attach carburetor wire (E) to carburetor control lever. This wire and casing must be inserted through loop in special segment (S) and held in place on arm under clip (G). Tighten the bolt to wire and housing firmly in place.
- 6.. Insert cable (L) into upper part of clip (K). Tighten the bolt to hold cable firmly in place. The cable must rest against the engine housing at (T) to avoid contact to muffler.
- 7.. Safety hand grip is shown at B. When lever (B) is held closed the motor will run. When released the motor stops instantly.
- 8.. Thread the starting rope through loop on handle.
- 9.. To start the motor, the height control lever (W) must be in the uppermost notch. In this position the cutter blades are in the transport position.
- 10.. To start the motor, position the knob in the segment (C) to "Start" position. This puts the carburetor on choke. Hold the safety hand grip (B) closed securely and pull the starting rope. When motor starts, slide the knob in segment (C) slightly forward until motor revs to fast speed. Motor speed is then controlled by sliding knob forward.
- 11.. To trim the ice. With the motor running, adjust the control lever (W) in the first notch. The cutting blades then contact the ice. Depth of the ice cut is determined by the lever in succeeding notches, and permits cut 1/4" in depth. The cutting blades may be moved in or outwardly to the relation of the boards. The guard must also be adjusted to prevent the cutting blades from contacting the boards. The cutter blades are carbide and will serve many hours of ice elimination along the boards.

## MAINTENANCE INSTRUCTIONS FOR THE MODEL 97 ICE EDGER

### 1. EDGER

- A. To insure a long lifetime of efficiency and use with the Ice Edger, it is recommended that all points of friction be lubricated weekly with #30 oil.
- B. All screws and nuts should be checked, prior to each use of the edger, to insure that they are properly seated and secured.

### 2. ENGINE

- A. For proper care and maintenance of the engine, please refer to the operating manual attached to edger.

**IMPORTANT:** READ ENGINE MANUAL THOROUGHLY BEFORE STARTING EDGER FOR THE FIRST TIME.

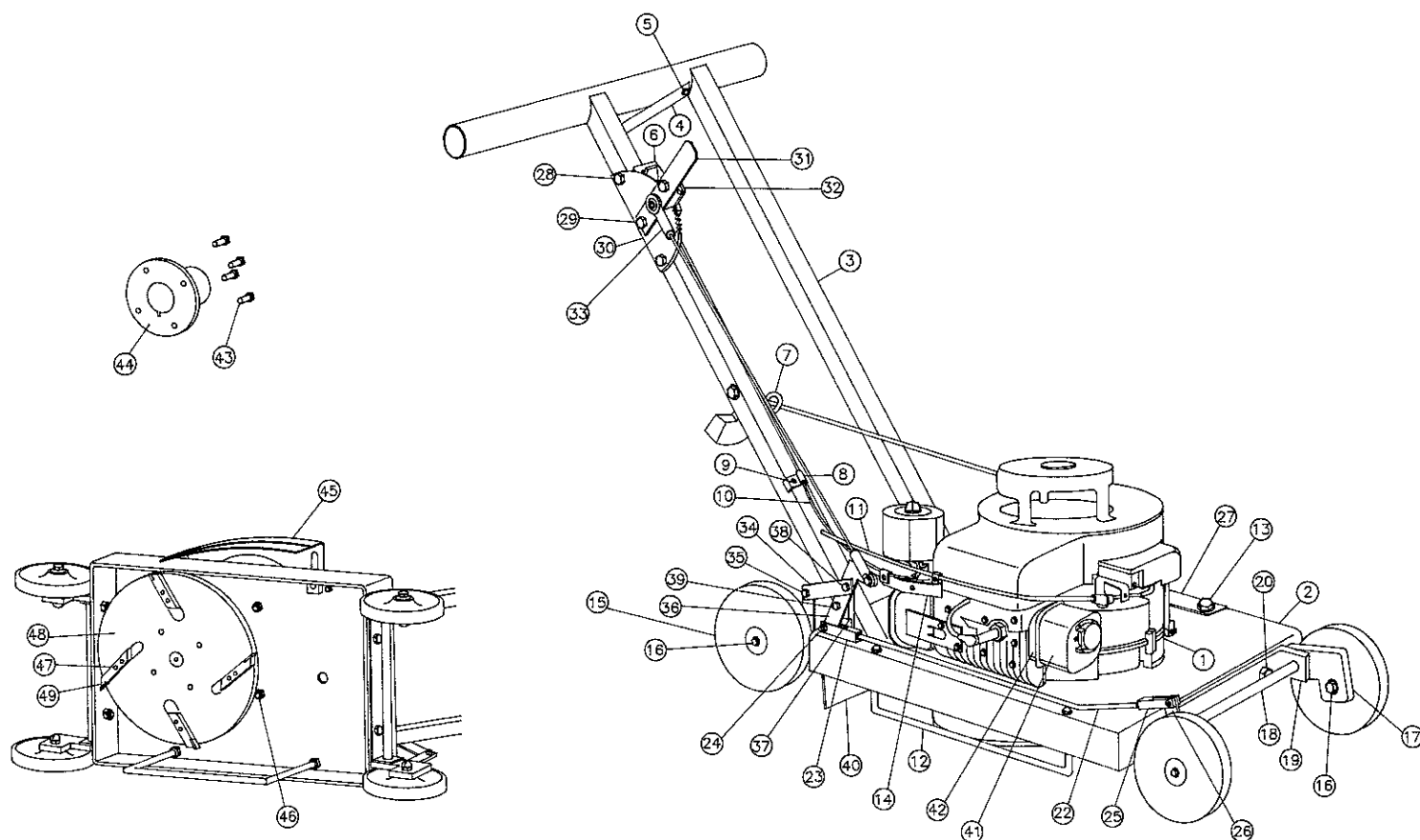
Fill engine with gas and oil according to specifications in engine manual.

## ADDITIONAL OPERATING INSTRUCTIONS

(REFER TO PARTS PAGE)

**CAUTION:** NEVER CHANGE GUIDE POSITION WHILE EDGER IS RUNNING.  
(#45, Parts Page)

Where there is a substantial accumulation of ice along the boards it will be necessary to make several cuts. In this case, after making first cut with blades set in a high position, lower cutter blades approximately 3/8". Continue lowering blades on each subsequent cut until desired ice level is achieved.



### ICE EDGER MODEL 97 PARTS LIST

<u>KEY #</u>	<u>PART #</u>	<u>DESCRIPTION</u>	<u>KEY #</u>	<u>PART #</u>	<u>DESCRIPTION</u>
1		Motor (5 H.P.)	11	97-123	Brake/Switch Cntrl Cable
3	97-100	Handle W/Bolts	33	97-124	Linkage
2	97-101	Base	32	97-125	Pawl Cover
40	97-102	Rubber Snow Guard	4	97-128	Brake/Switch Cntrl Plate
12	97-103	Rod Guard	16	97-129	Axle Bolt
19	97-104	Carrier Plate	13	97-130	Guard Bolt
18	97-105	Axle Shaft	9	97-131	Bolt
17	97-106	Axle Bracket	20	97-132	Carrier Plate Bolt
26	97-107	Axle Brkt W/Leverage Arm	24	97-133	Linkage Bolt
27	97-108	Carriage Plate	28	97-134	Ratchet Bolt
36	97-109	Height Control	29	97-135	Leverage Bolt
34	97-110	Linkage Plate	38	97-136	Linkage Bolt
23	97-111	Rear Linkage Coupler	43	97-137	Plate Hub Bolt
22	97-112	Height Control Shaft	46	97-138	Motor Anchor Bolt
25	97-113	Front Linkage Coupler	47	97-139	Cutter Bolt
14	97-114	Cable Mount	15	97-140	Wheel W/Bushing Assy
42	97-115	Muffler Flange	5	97-141	Bolt
39	97-116	Linkage Bolt	41	90-175	Muffler
35	97-117	Linkage Bolt	48	90-149	Cutter Plate
6	97-118	Carburetor Control Assy	49	90-151	Cutter Blade
10	97-110	Carburetor Control Wire	44	91-202	Hub
30	97-120	Ratchet	27	93-224	Guard
32	97-121	Pawl	7	94-263	Motor Rope Loop
31	97-122	Lever	8	94-262	Cable Clip